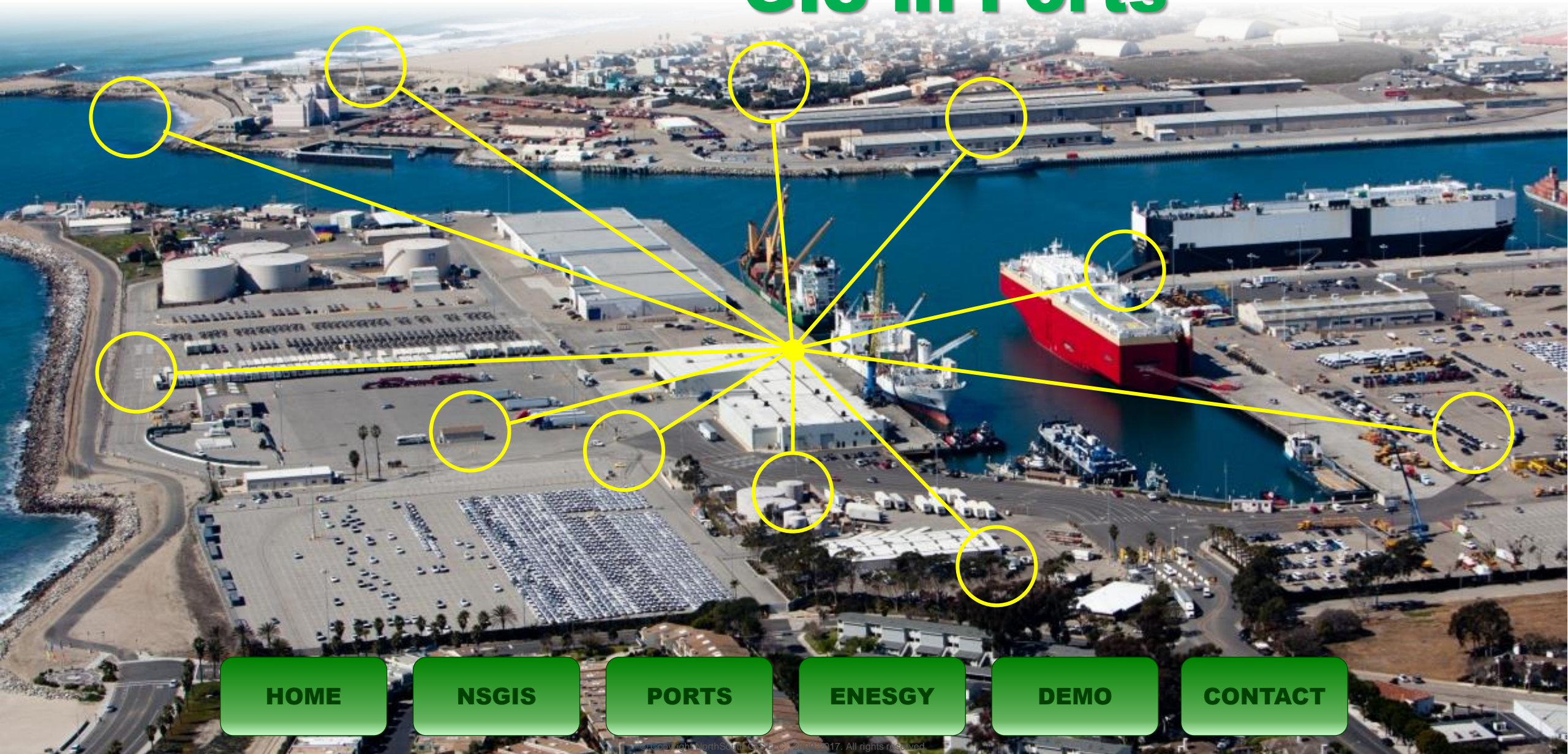


# A Practical Approach to GIS in Ports



**HOME**

**NSGIS**

**PORTS**

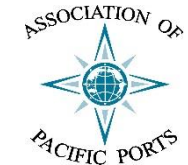
**ENESGY**

**DEMO**

**CONTACT**

## Company

- NorthSouth GIS LLC
- Founded in 2005
- Headquarters in Los Angeles
- Geospatial Systems Integrator
- An integral member of the Ports industry
- Esri's leading partner in ports
- Esri Gold Partner since 2010



HOME

NSGIS

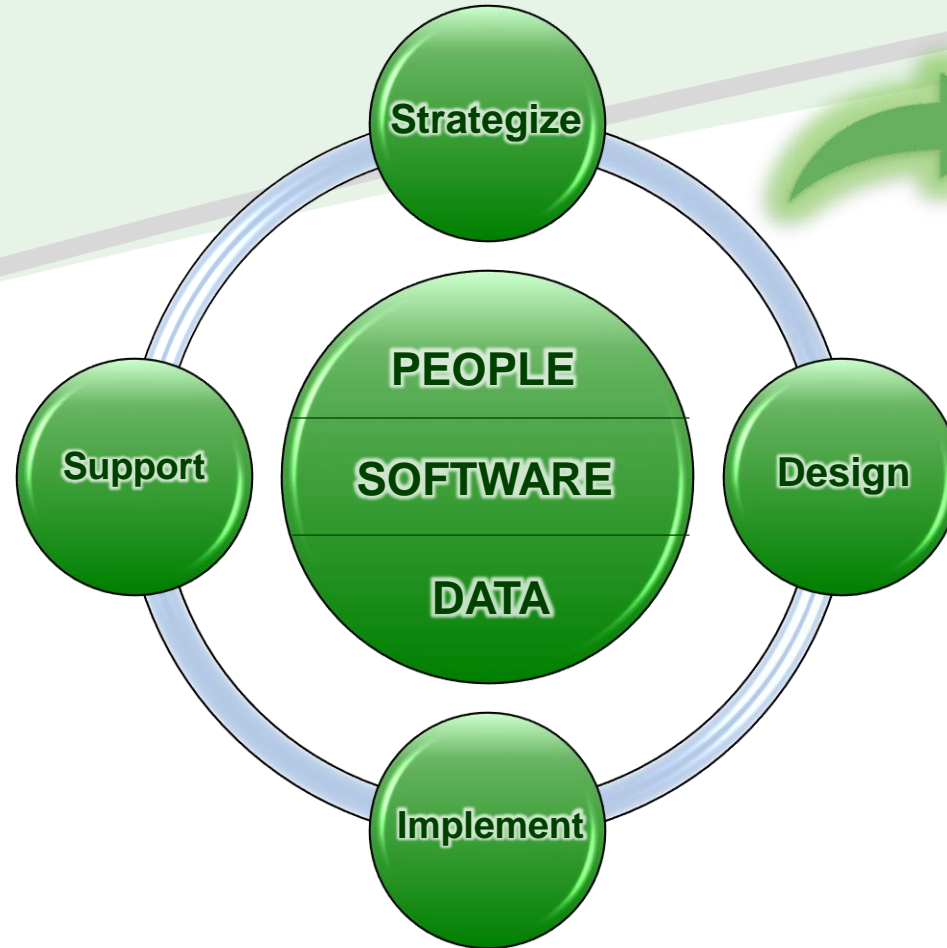
PORTS

ENESGY

DEMO

CONTACT

# What We Do For Ports



Needs Assessments  
Strategic Plans  
Grants, RFPs, Contracts  
Implementation Design  
System Architecture  
Software Implementation  
Geodatabase Design  
Data Conversion  
Systems Integration  
COTS Systems  
Custom Development  
Training and Outreach  
Support  
Staffing

[HOME](#)

[NSGIS](#)

[PORTS](#)

[ENESGY](#)

[DEMO](#)

[CONTACT](#)

# Strategic Planning

- Port of Houston
- Port of Vancouver
- Port Tampa Bay
- Port of San Diego

[HOME](#)

[NSGIS](#)

[PORTS](#)

[ENESGY](#)

[DEMO](#)

[CONTACT](#)

# Common Themes

- Governance
- IT & Engineering
- Standards
- Education
- Staffing
- Maps *and* Apps
- Integration
- Leases
- Berths
- Utilities
- Critical Infrastructure
- Vessels
- Documents

[HOME](#)

[NSGIS](#)

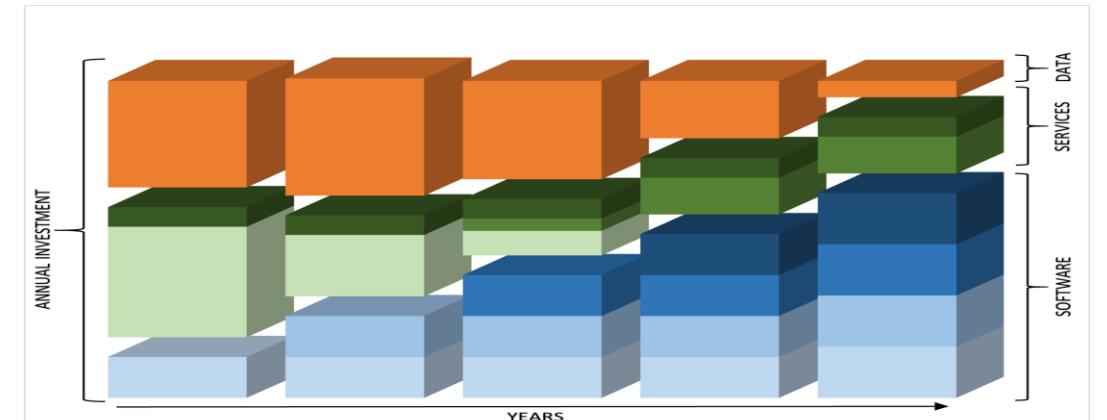
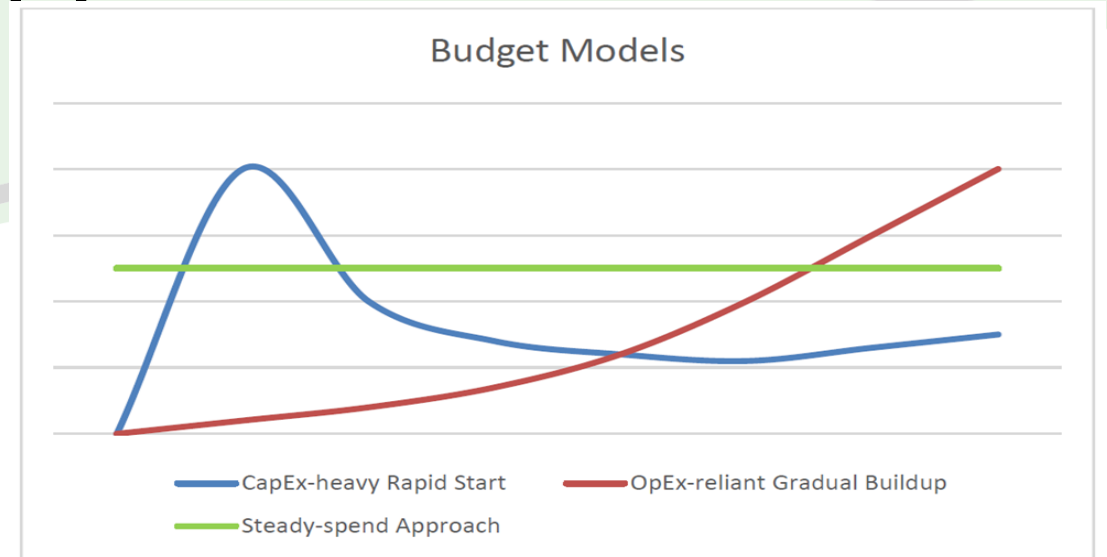
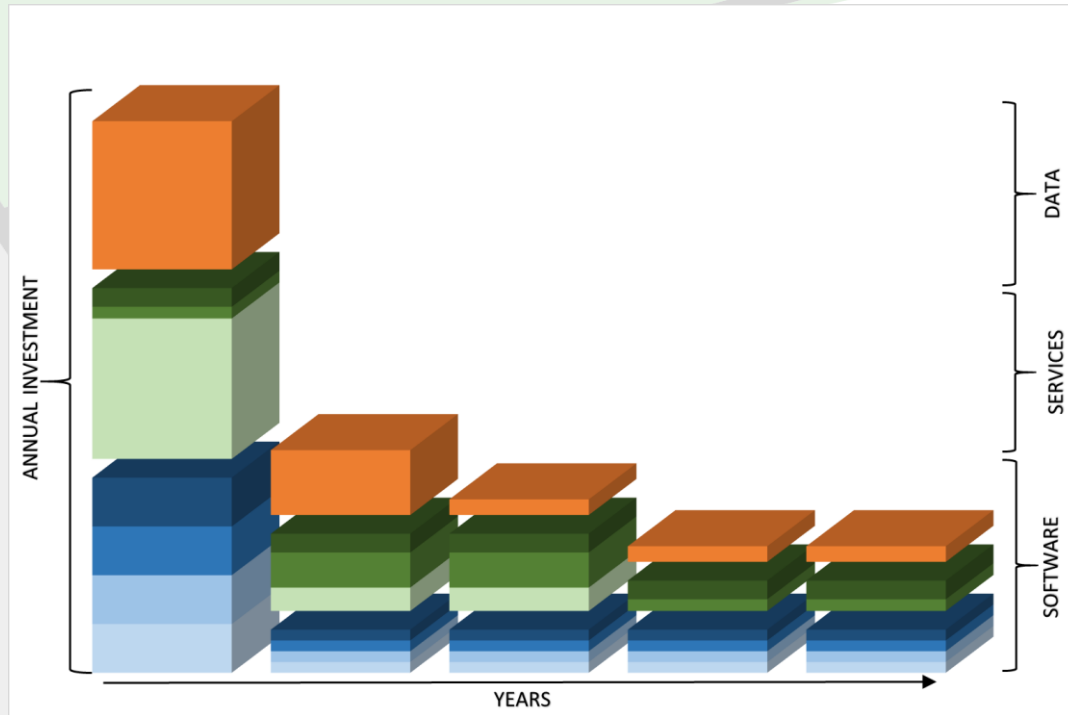
[PORTS](#)

[ENESGY](#)

[DEMO](#)

[CONTACT](#)

# Common Approaches



[HOME](#)

[NSGIS](#)

[PORTS](#)

[ENESGY](#)

[DEMO](#)

[CONTACT](#)

# Ports

- Port of Los Angeles
- Port of Oakland
- Port of Stockton
- Port of Tacoma
- Port Tampa Bay
- Port of Vancouver



- Port of Long Beach
- Port of San Diego
- Port of Hueneme
- Port of Houston
- Port of Charleston



HOME

NSGIS

PORTS

ENESGY

DEMO

CONTACT



# Port of Los Angeles

**DOLA**  
THE PORT OF LOS ANGELES ENTERPRISE GIS

Quick Tools... | China Shipping Container Terminal

Spelling Sensitivity: Low High | Please enter search text here | Find | More Results

All Available Layers

**ARAPAHO 183 0**

- Maritime Mobile No.: 367004270
- Publish Date: 7/9/2012 5:15:57 PM +00:00
- Marine Traffic Report: [Marine Traffic Report](#)
- Vessel: **ARAPAHO**
- Heading: 183.00 (S)
- Latitude: 33.7504
- Longitude: -118.273
- Speed: 0.00 kts
- Destination: Unknown
- ETA: Unknown
- Navigation Status: Not defined
- Ship Type: Vessel
- Call Sign: WCX9424
- IMO Number:
- Dimension to Port: 18.37 ft
- Dimension to Starboard: 7.87 ft
- Dimension to Bow: 39.37 ft
- Dimension to Stern: 82.02 ft



Los Angeles collaborates internally better because of NSGIS's enterprise approach and system integrations

HOME

NSGIS

PORTS

ENESGY

DEMO

CONTACT





# Port of Oakland

**PORTVIEW** PORT SECURITY MANAGEMENT SYSTEM

Search...

PSMS Primary Incident

Quick Tools... Esri Community Base

**Incident Details**

ID	4007
Created By	GISsupport
Created Date	4/9/2015 5:30 PM
Last Edited By	GISsupport
Last Edited Date	4/9/2015 5:31 PM
Status	Open
Is Incident Closed?	No
Incident Type	Train Derailment (Cargo)
Priority	High
Response Party 1	Port of Oakland
Response Party 2	Oakland Fire Department
Response Party 3	Oakland Police Department
Comments	Stalled trucker on railroad caused traction cab to derail - no major

Train Derailment (Cargo)  
Incident ID: 4007  
Creation: gisupport - 4/9/2015 5:30 PM  
Last Edit: PSMSTestEditor - 4/24/2015 5:31 PM  
Status: Active  
[Edit Incident](#) | [View Incident](#) | [Get Incident](#)

Multiple Features Found  
Camera Id: Cam29  
Add To Selected | View Additional Details

Port View - Video Camera Stream Viewer - In...  
Window registered with group  
11:02:38 04/16/2014  
Frames: 00012 FPS: 7.61

Oakland runs its 24/7 Security Operations Center with  
**Enesgy™ for Ports**

HOME

NSGIS

PORTS

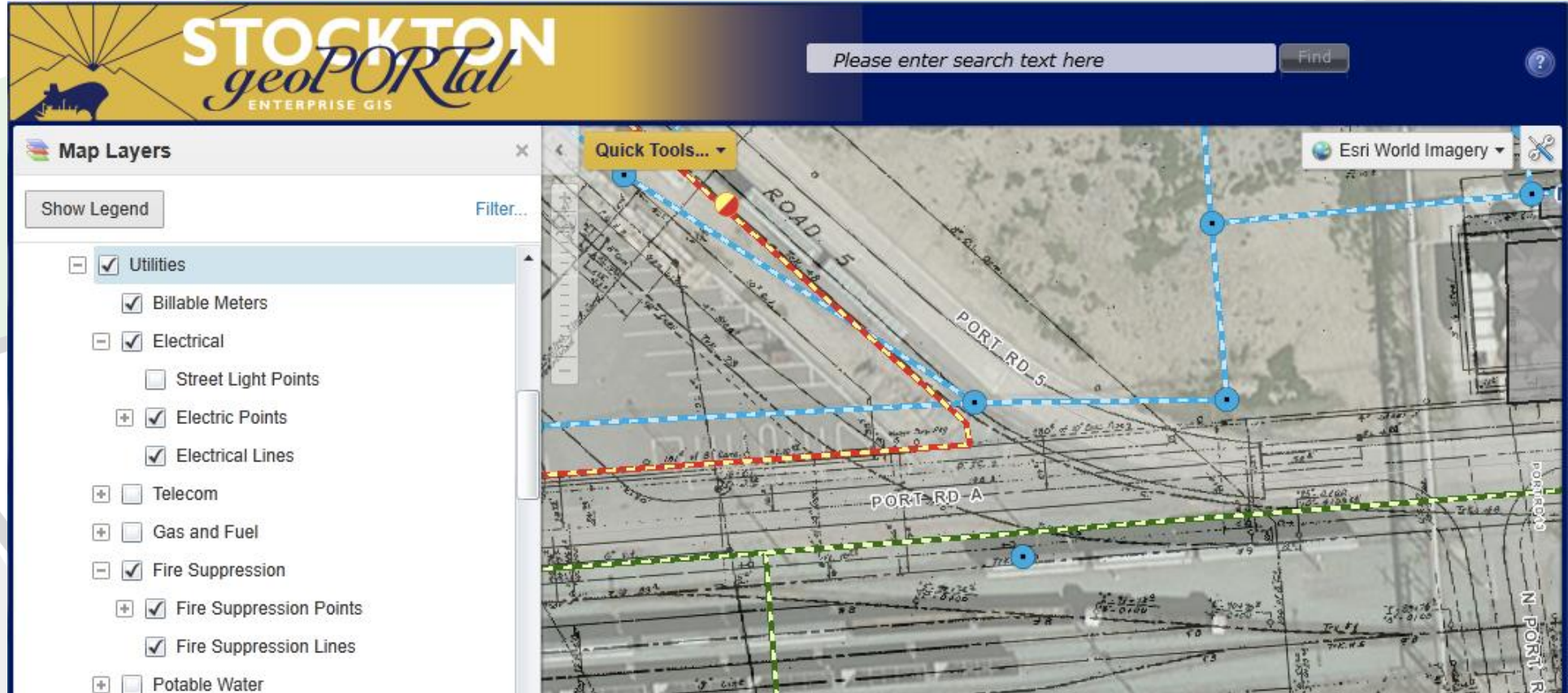
ENESGY

DEMO

CONTACT



# Port of Stockton



Stockton is ensuring their utility data is accurate by linking GIS to vintage paper and CAD as-builts

[HOME](#)

[NSGIS](#)

[PORTS](#)

[ENESGY](#)

[DEMO](#)

[CONTACT](#)



# Port of Tacoma

Port of Tacoma Port view

Search...

Map Layers

Map Theme: All Available Layers (default)

Show Legend

Quick Tools

All Available Layers

- Lintuses
- Steep Slopes
- Truck Class
- Street Labels
- Streets
- Railroads
- Encumbrances and Easements
- Building Asset Registry
- Building Footprints
- PortLots Available for Leasing
  - Currently Leasable
  - Out of Agreement - Not Terminated

Emergency Contact Report

Expiring Leases Report

Leasable Properties Report

Past and Present PortLots

How to use PortView

Help

Workflows

27

29

7.2

Past and Present Leases: Auto Warehousing

[Zoom to Feature](#) | [Pan to Feature](#) | [Create a Report](#) | [Copy to Drawing](#)

[Remove from Selected](#) | [Export Feature Attachments](#)

Details		Attributes	
Field Name		Field Value	
LeaseId		7	
AmendmentId		2	
AreaFeet		7008313.2	
AreaAcres		160.9	
TenantId		7	
SiteAddress		2810-B Marshall Ave	

Tacoma is managing its real estate better with the  
NSGIS Land Assets Data Model for Ports

[HOME](#)

[NSGIS](#)

[PORTS](#)

[ENESGY](#)

[DEMO](#)

[CONTACT](#)



# Port of Long Beach



Traffic Totals		AM Peak Hour	PM Peak Hour
Traffic Count ID:	6		
Traffic Count Location Name:	6, Gerald Desmond Bridge		
Direction:	EB/WB		
Count Date:	Tue Jun 14 2016		
Daily Total Volume (East)		29,774	
Daily Truck Volume (East)		7,128	
Daily Auto Volume (East)		22,646	
Daily Total Volume (West)		26,357	
Daily Truck Volume (West)		7,150	
Daily Auto Volume (West)		19,207	
Linked Excel Document		<a href="#">Excel Doc</a>	

Long Beach uses NSGIS to support its extensive enterprise GIS system and has deployed Enesgy™ for Ports

[HOME](#)

[NSGIS](#)

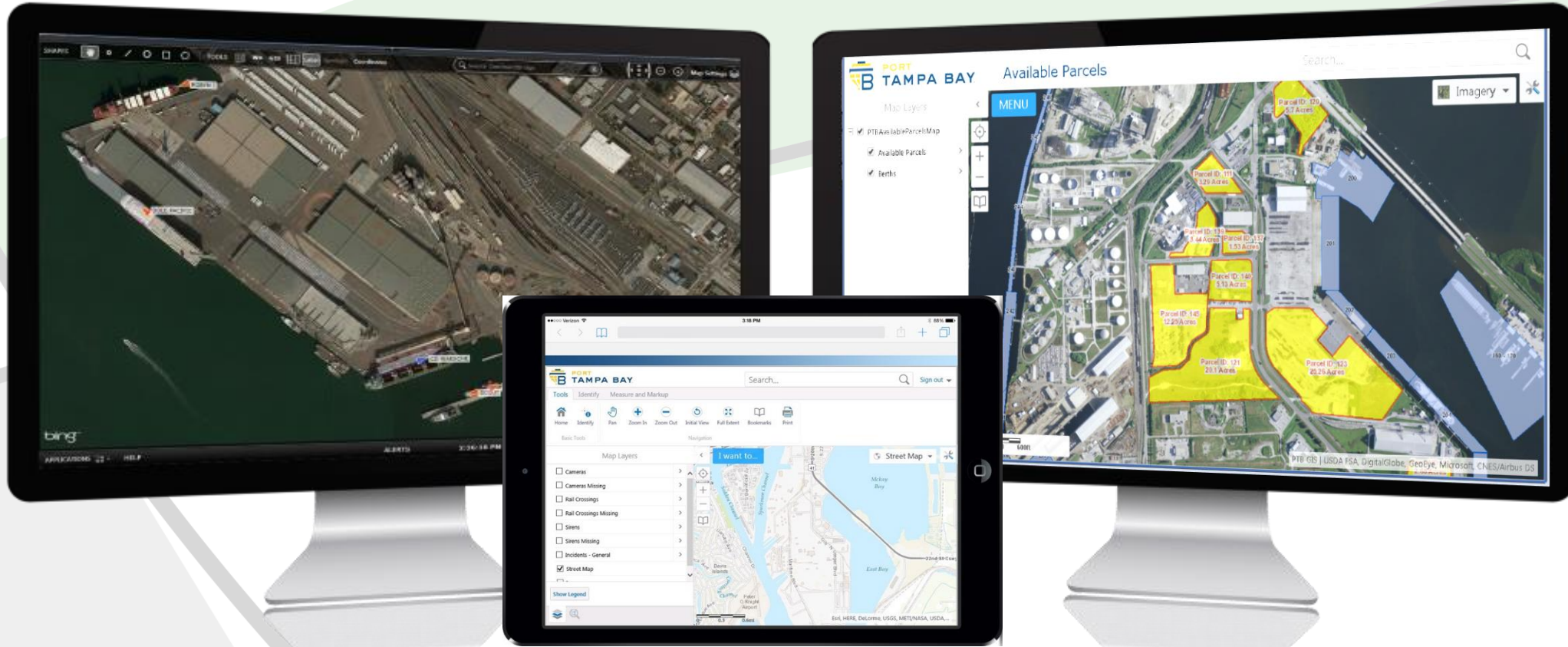
[PORTS](#)

[ENESGY](#)

[DEMO](#)

[CONTACT](#)

# Port Tampa Bay



Tampa is more resilient to disaster now because of its use of geospatial technologies

[HOME](#)

[NSGIS](#)

[PORTS](#)

[ENESGY](#)

[DEMO](#)

[CONTACT](#)



# Port of San Diego



San Diego Unified Port District  
GIS Strategic Plan Project

GIS Strategic Plan  
Version 1.0

Future State  
Version 1.0

Current State  
Version 1.0

Le	
Area Sq Footage	5078048.6
Property_Code	N/A
Lease_Term	N/A

USDA FSA, DigitalGlobe, GeoEye, Microsoft, CNE...

San Diego has made significant improvements in asset management and situational awareness with GIS

HOME

NSGIS

PORTS

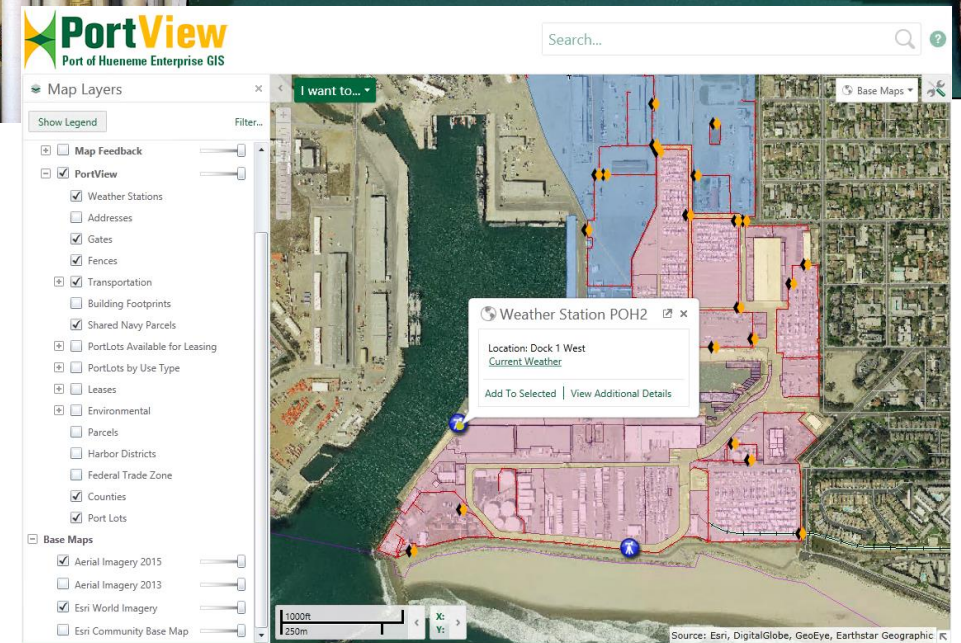
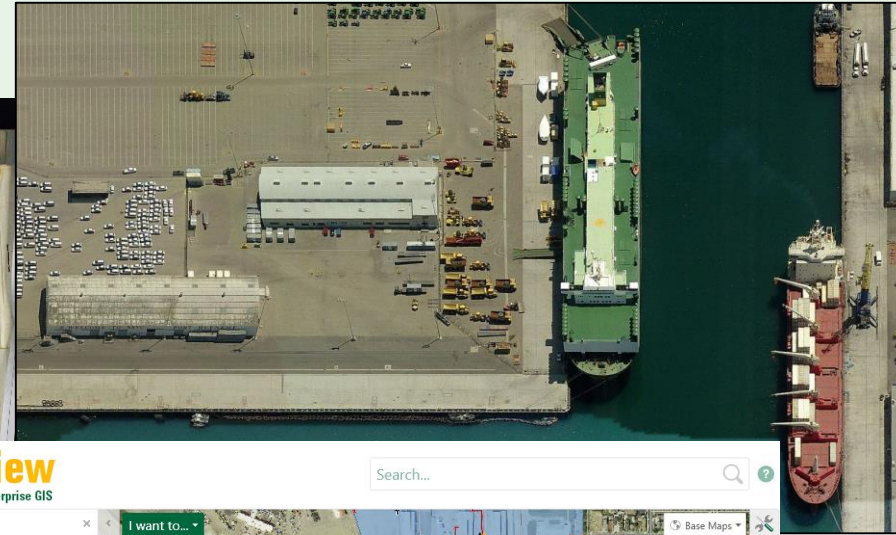
ENESGY

DEMO

CONTACT

# Port of Hueneme

- Esri-based Enterprise GIS infrastructure
- Data conversion and field verification
- Enesgy™ for Ports software implementation
- Port-specific GIS map viewer (*PortView*)
- Data assessment and data conversion project
- Training
- Staff augmentation and off-site support



HOME

NSGIS

PORTS

ENESGY


DEMO

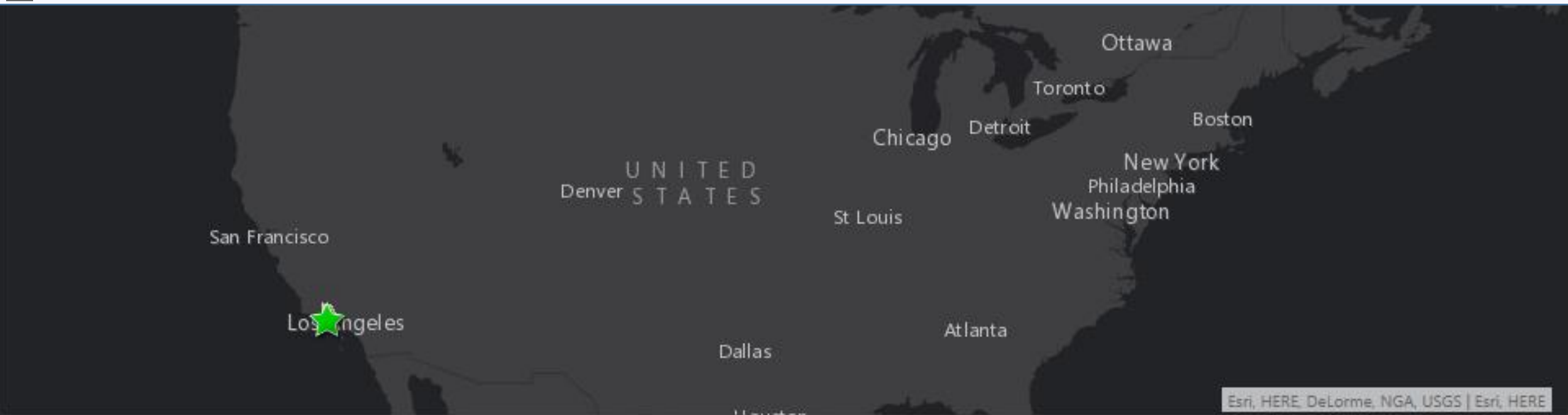
CONTACT



# Port of Hueneme

- A regional economic engine
- Contributing to the local economy
- Powering local businesses

 Click Here to Unlock Map



Esri, HERE, DeLorme, NGA, USGS | Esri, HERE

**HOME**

**NSGIS**

**PORTS**

**ENESGY**


**DEMO**

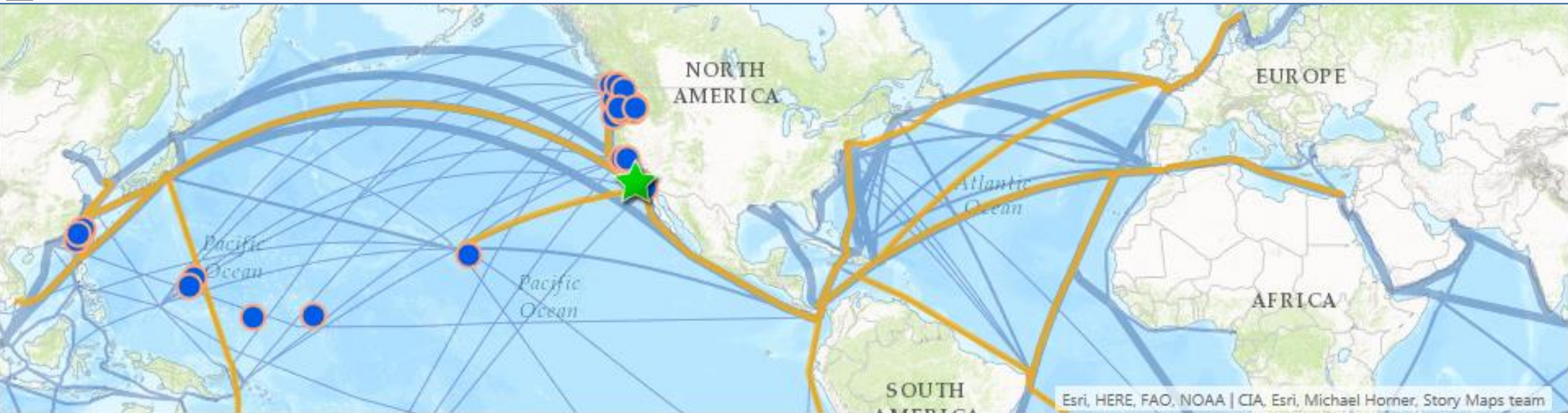
**CONTACT**



# Port of Hueneme

- A small but very efficient global trading partner
- Excellent access to the largest economy in the US
- Avoids the pains of working in Los Angeles, Long Beach and Oakland

 Click Here to Unlock Map



**HOME**

**NSGIS**

**PORTS**

**ENESGY**


**DEMO**

**CONTACT**



# Port of Hueneme

- Highway access to the Los Angeles Metro and to California's Central Coast
- Rail access to entire United States
- 70NM from LA/Long Beach, 400NM from Oakland

 [Click Here to Unlock Map](#)



[HOME](#)

[NSGIS](#)

[PORTS](#)

[ENESGY](#)

[DEMO](#)

[CONTACT](#)

# Starting Point

- 1,000s of paper maps and CAD drawings



[HOME](#)

[NSGIS](#)

[PORTS](#)

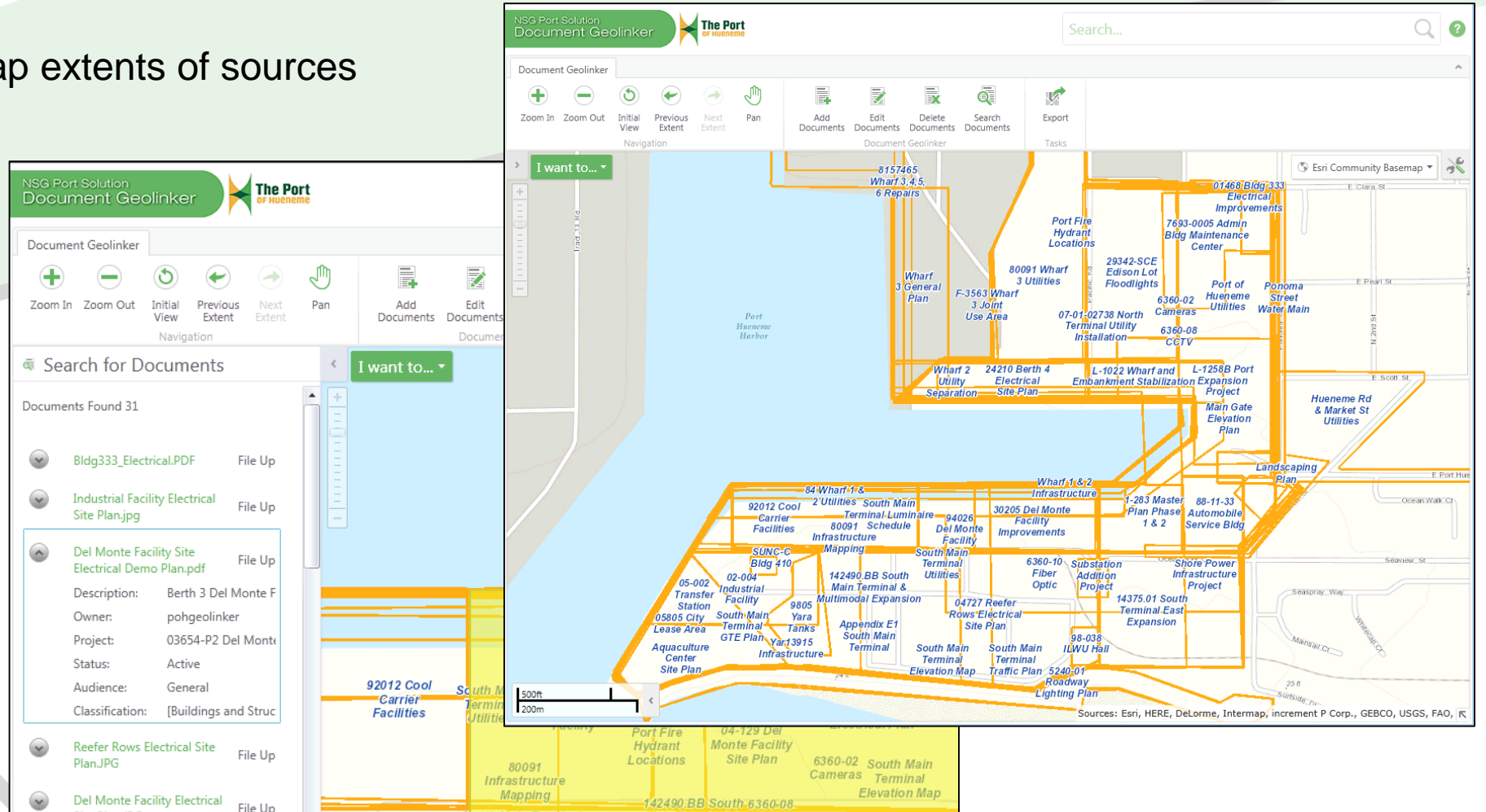
[ENESGY](#)

[DEMO](#)

[CONTACT](#)

# Data Assessment

- Used GIS to map extents of sources
- Worked with port to prioritize data for conversion



The screenshot displays the NSG Port Solution Document Geolinker interface. The main map area shows the Port of Hueneme Harbor with various infrastructure projects overlaid in orange. The search results panel on the left lists 31 documents found, including:

- Bldg333\_Electrical.PDF File Up
- Industrial Facility Electrical Site Plan.jpg File Up
- Del Monte Facility Site Electrical Demo Plan.pdf File Up**
- Reefer Rows Electrical Site Plan.JPG File Up
- Del Monte Facility Electrical File Up

The selected document, 'Del Monte Facility Site Electrical Demo Plan.pdf', has the following details:

- Description: Berth 3 Del Monte F
- Owner: pohgeolinker
- Project: 03654-P2 Del Monte
- Status: Active
- Audience: General
- Classification: [Buildings and Struc

[HOME](#)

[NSGIS](#)

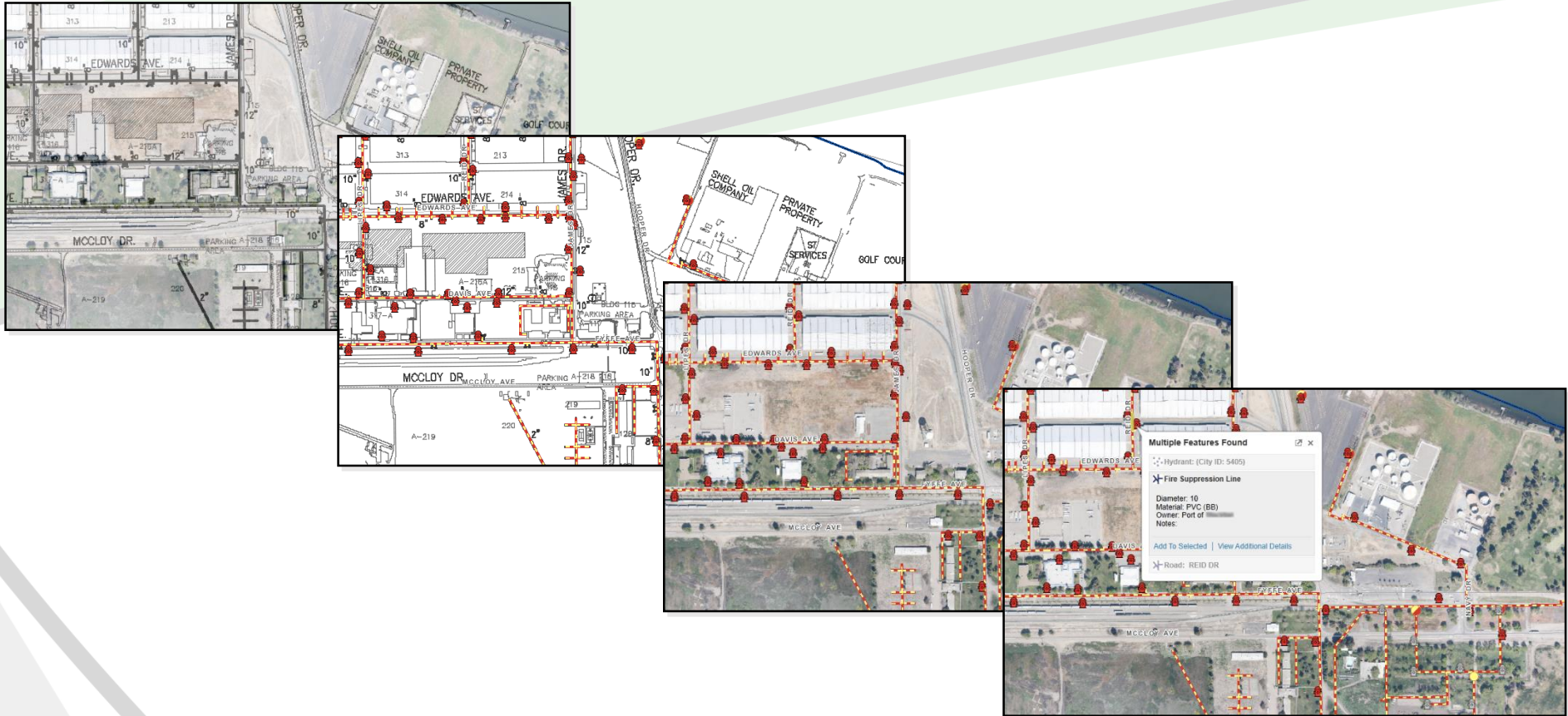
[PORTS](#)

[ENESGY](#)

[DEMO](#)

[CONTACT](#)

# Data Conversion



[HOME](#)

[NSGIS](#)

[PORTS](#)

[ENESGY](#)

[DEMO](#)

[CONTACT](#)

# Data Verification

Select Inspection to Configure ✕

Please select an action to perform

Create new inspection

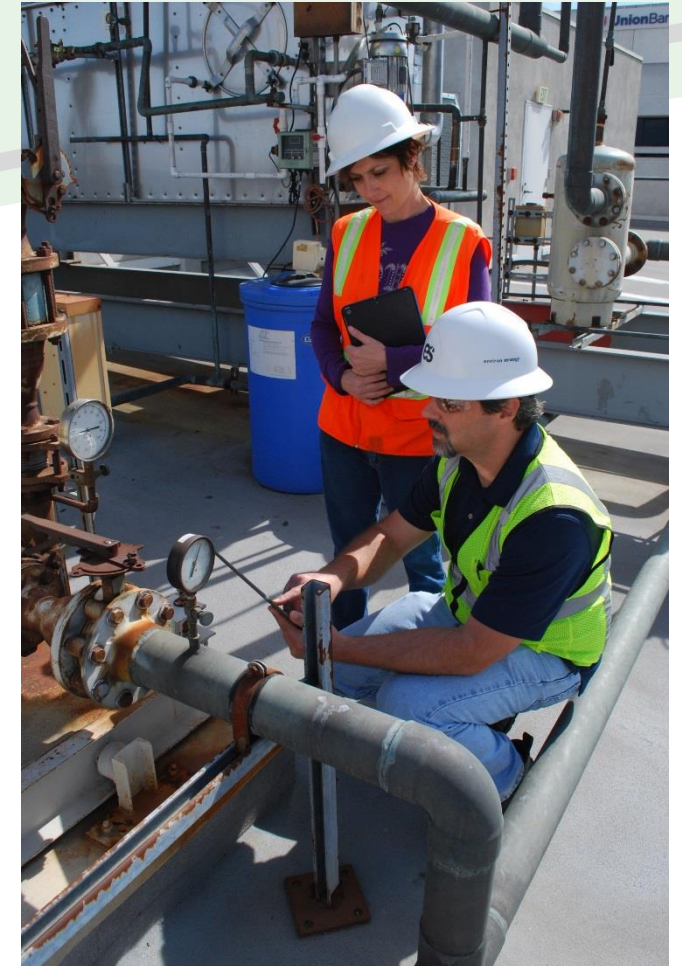

Update existing inspection

Storm Drains

Delete an existing inspection

Storm Drains

[Exit](#) [Next](#)



[HOME](#)

[NSGIS](#)

[PORTS](#)

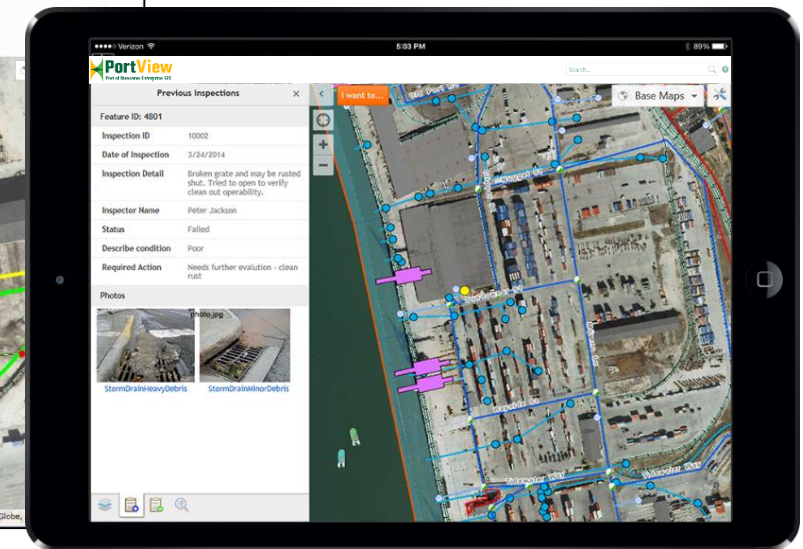
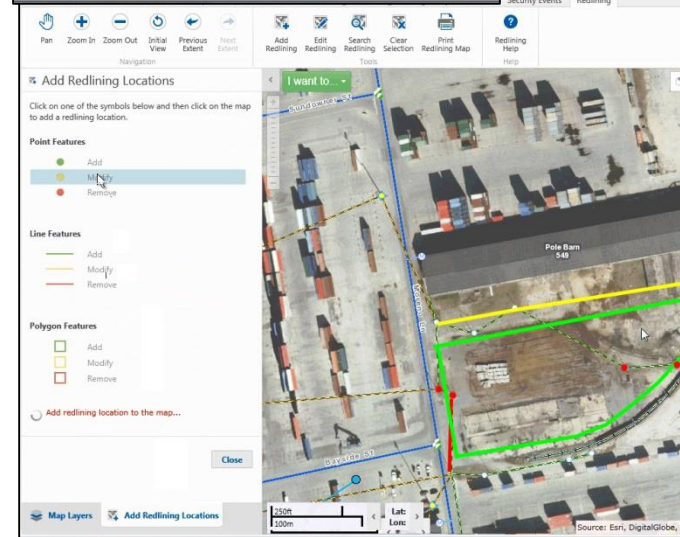
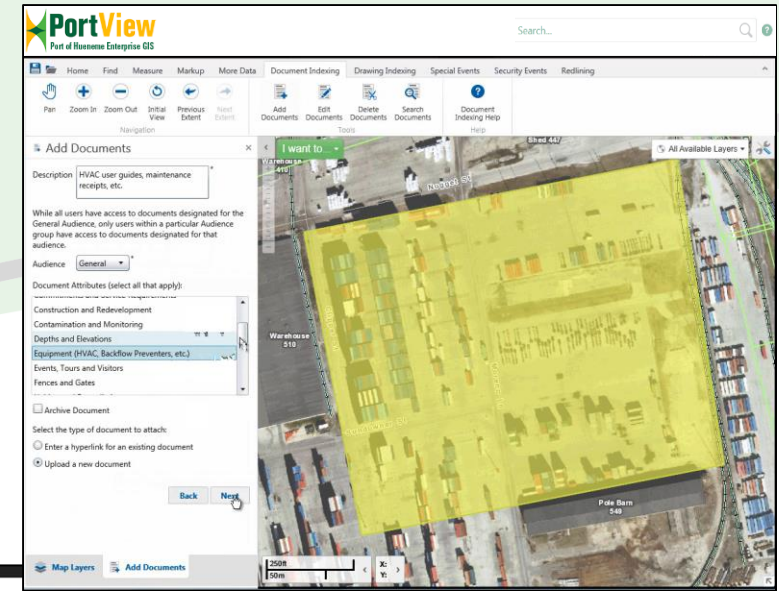
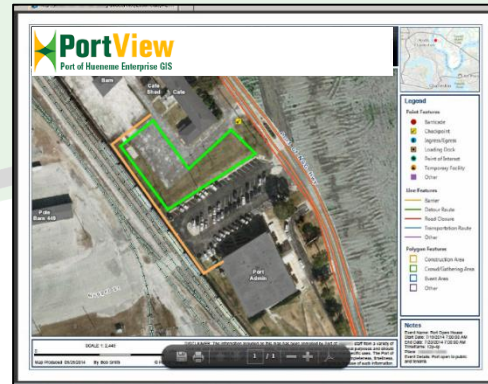
[ENESGY](#)

[DEMO](#)

[CONTACT](#)

# Applications

- Platform-agnostic map viewers
- AIS vessel data
- ArcGIS Online tools: Collector, Survey 1-2-3, Story Map
- Energy Events
- Energy Documents
- Energy Map Feedback
- Energy Inspections
- Energy Incidents



HOME

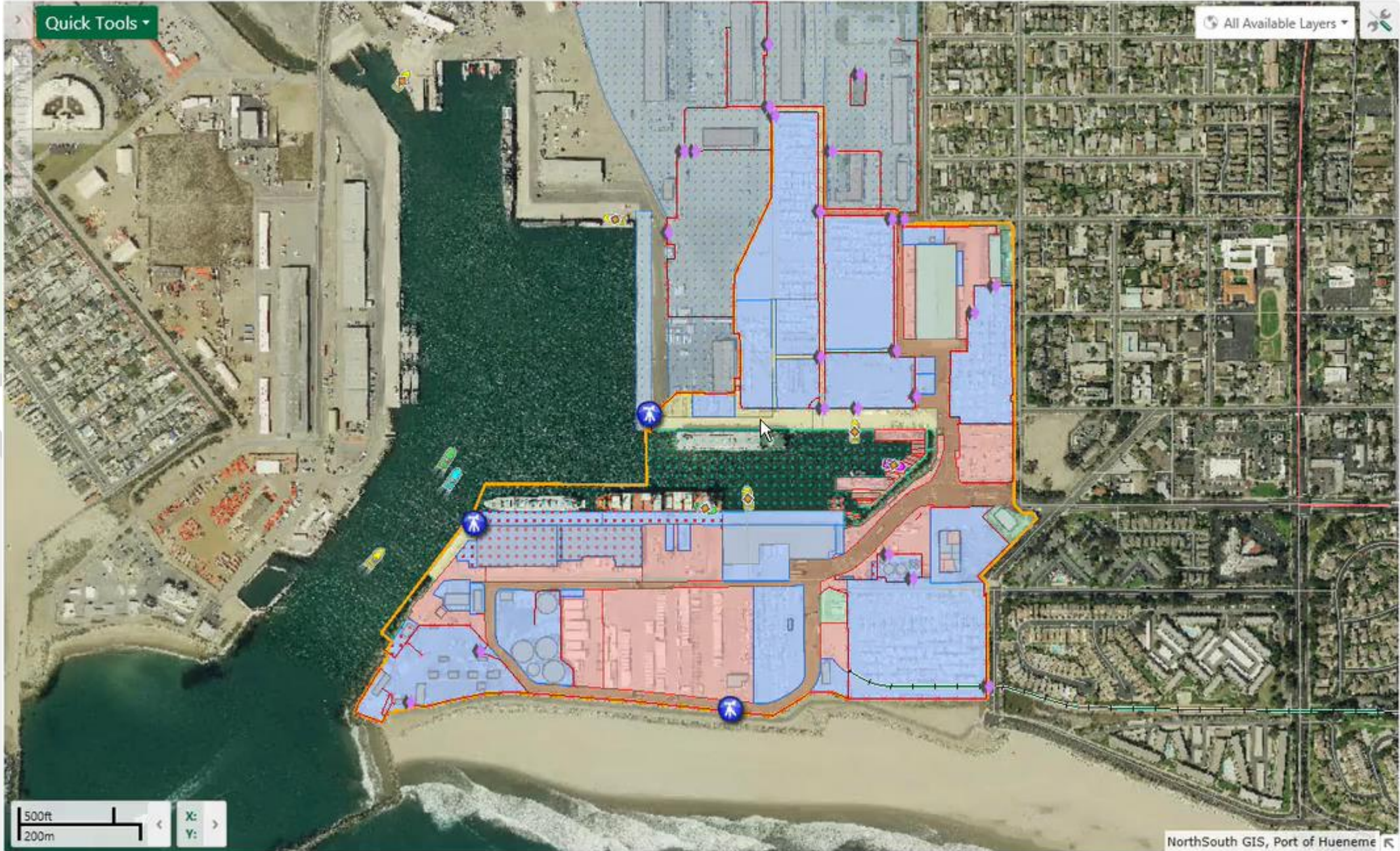
NSGIS

PORTS

ENESGY

DEMO

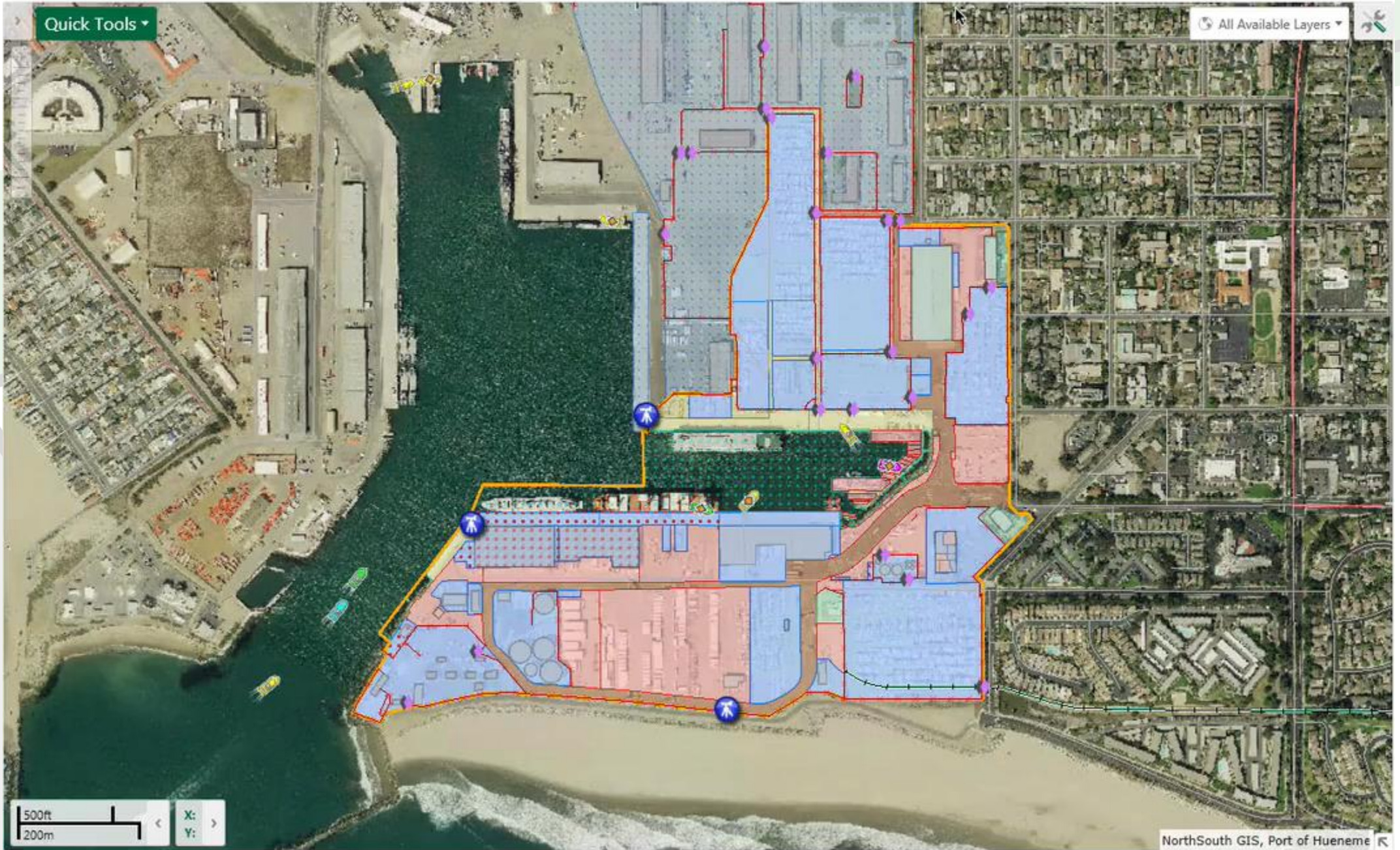
CONTACT

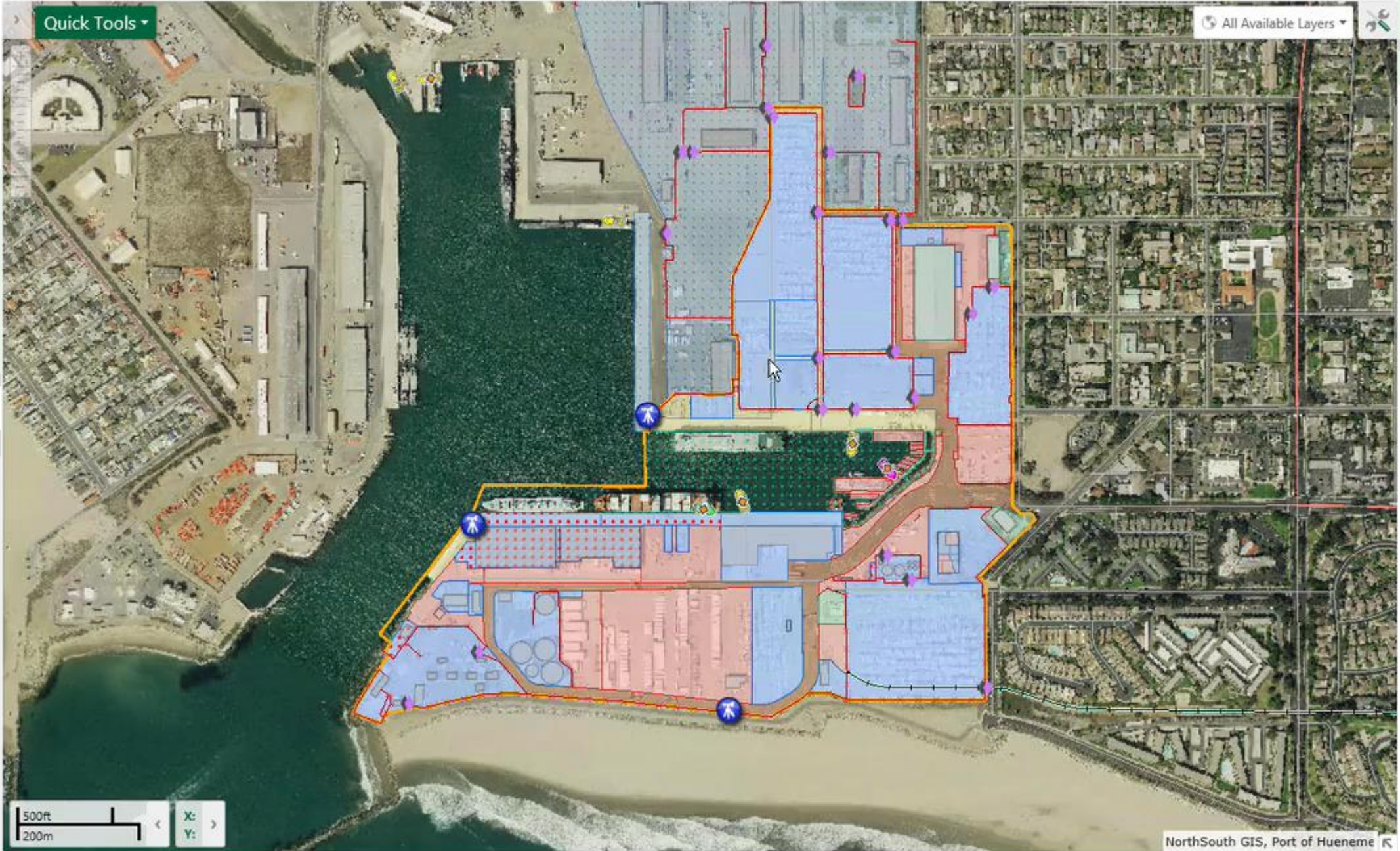




Quick Tools ▾

All Available Layers ▾





Map Layers

Map Theme: All Available Layers (default)

Show Legend

Filter...

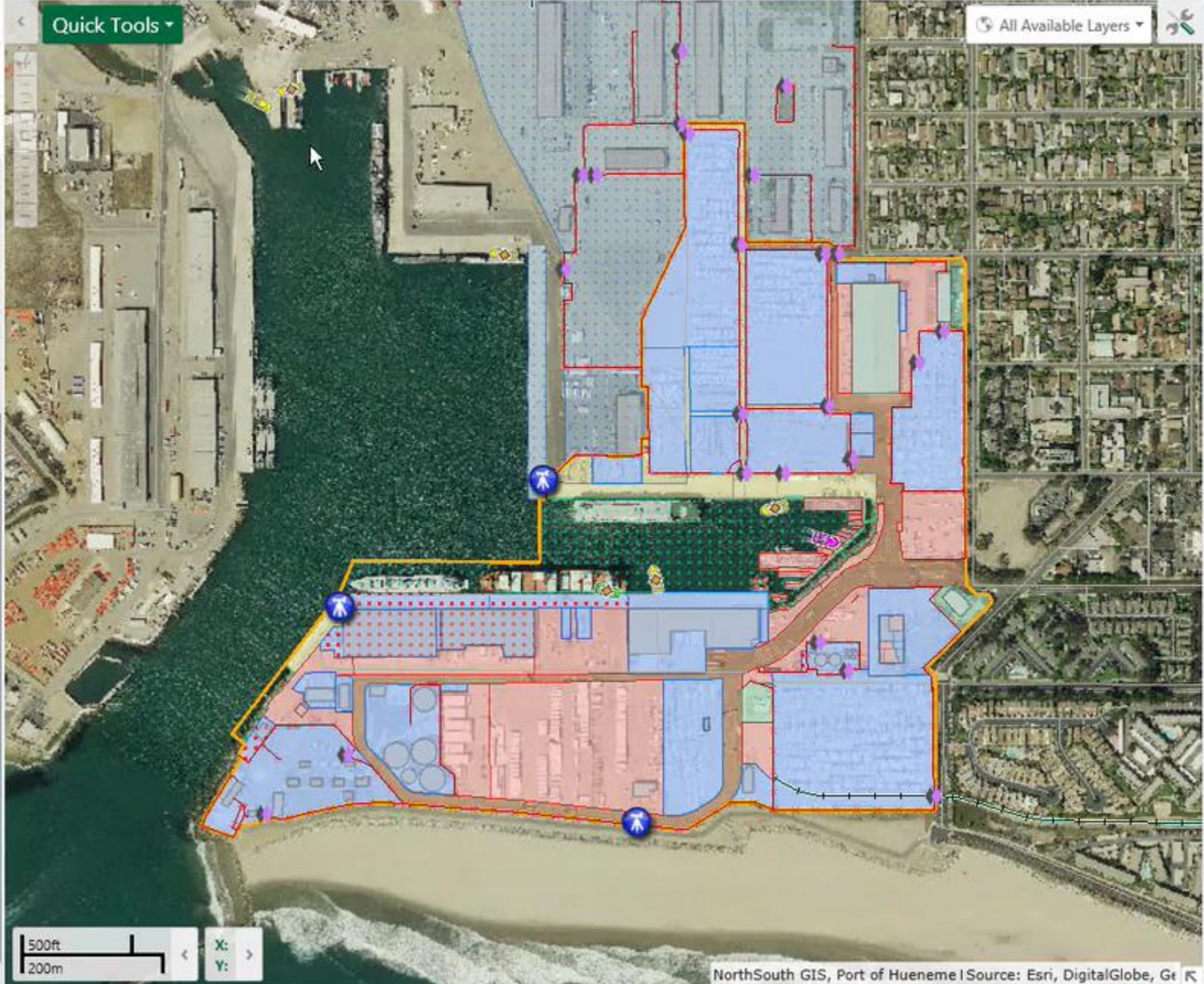
- Security Cameras
- Safety Features
- Wharf Features
- Gates
- Fences
- Utilities
- Transportation
- Port Boundary
- Building Footprints
- Shared Navy Parcels
- PortLots Available for Leasing
- PortLots by Use Type
- Leases
- Environmental
- Parcels
- Harbor Districts
- Federal Trade Zone
- Counties

Base Maps

- NOAA Nautical Charts
- Esri Community Base Map
- Aerial Imagery 2015
- Aerial Imagery 2013
- Esri World Imagery

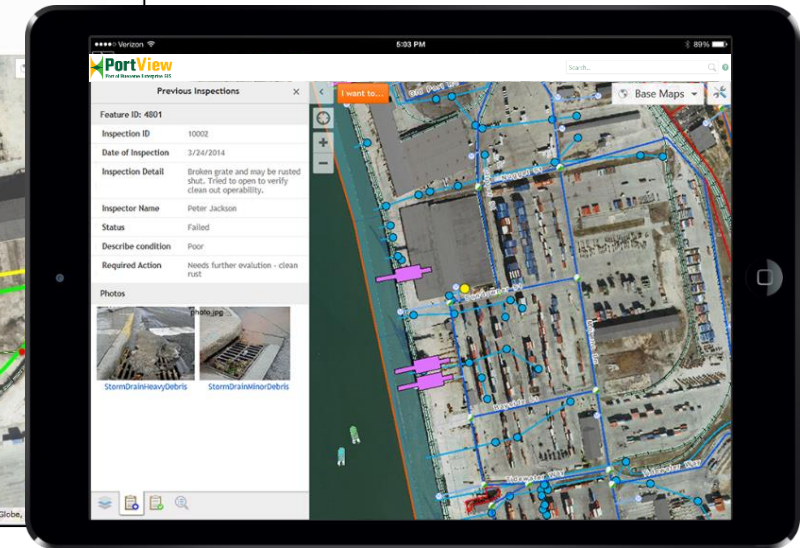
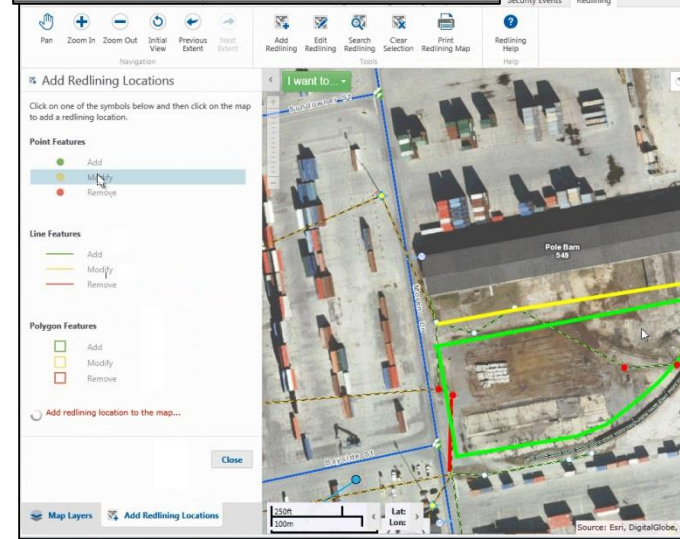
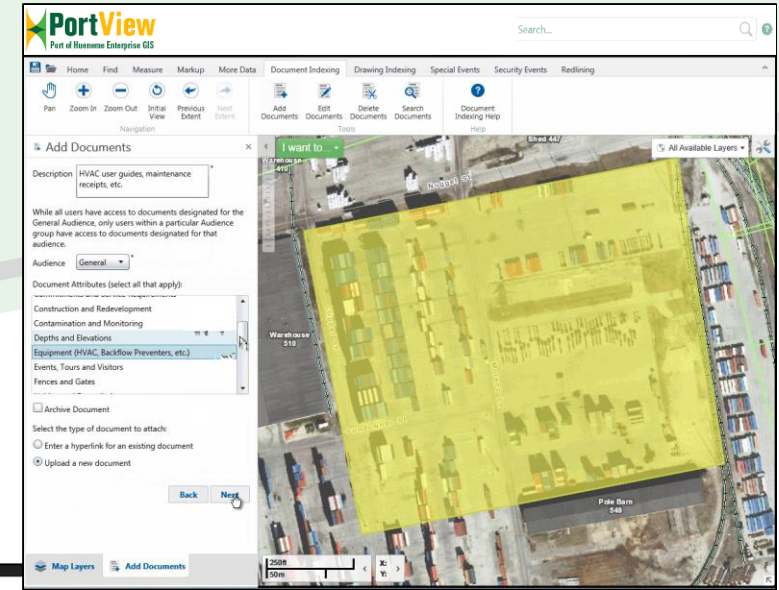
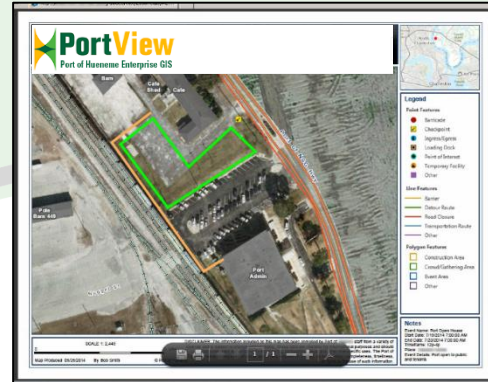
Quick Tools

All Available Layers



# Applications

- Platform-agnostic map viewers
- AIS vessel data
- ArcGIS Online tools: Collector, Survey 1-2-3, Story Map
- Situation and event planning tool
- Document Geolinker
- Map quality feedback tool
- In-field asset inspection extension
- Incident reporting extension



HOME

NSGIS

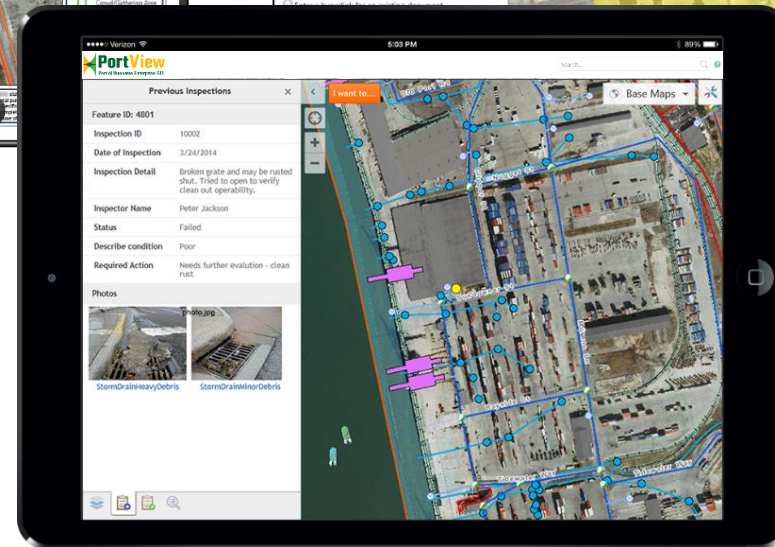
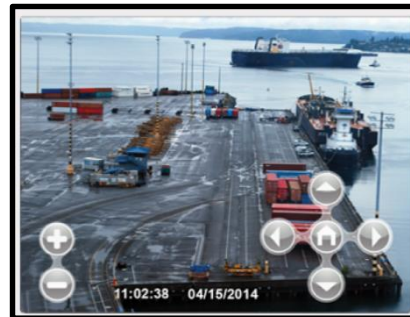
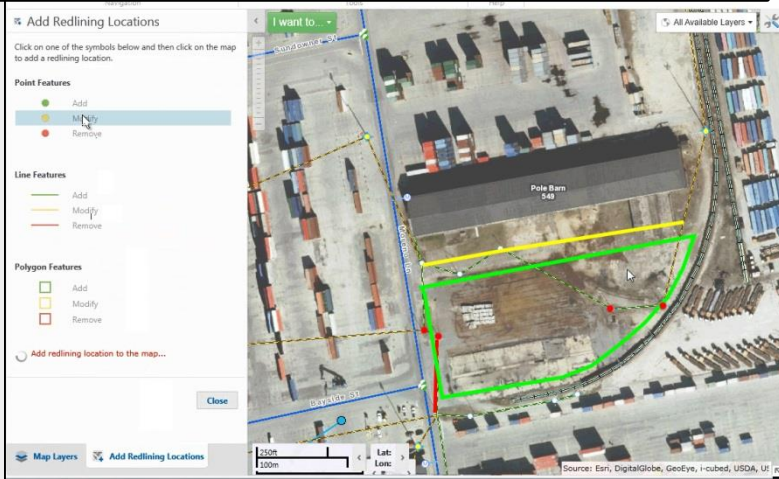
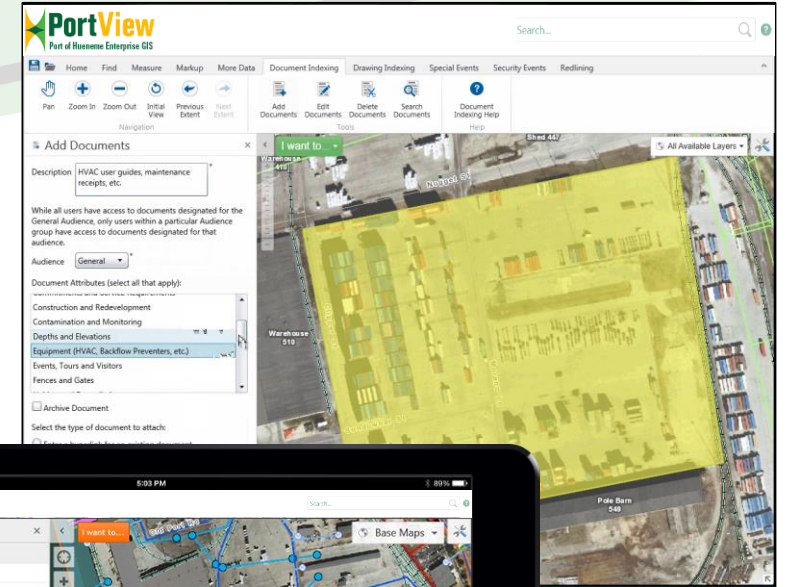
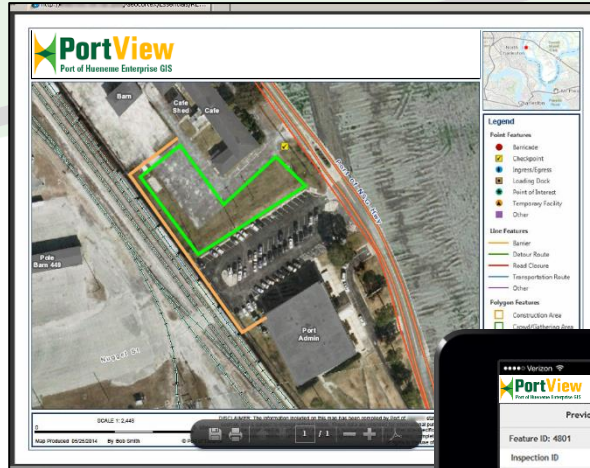
PORTS

ENESGY

DEMO

CONTACT

# Geospatial Solutions for Ports



**HOME**

**NSGIS**

**PORTS**

**ENESGY**

**DEMO**

**CONTACT**

- [ports@nsgis.com](mailto:ports@nsgis.com)
- <http://ports.nsgis.com>

NorthSouth GIS LLC

244 S. San Pedro Street, Suite 202  
Los Angeles, CA 90012

Tel: (800) 866-5013 USA

Tel: +1 (310) 606-2783 Int'l

Fax: (213) 802-1398



**HOME**

**NSGIS**

**PORTS**

**ENESGY**

**DEMO**

**CONTACT**