



The Port of Oakland Case Study



PORT OF OAKLAND

NorthSouth GIS Strengthens Security at the Port of Oakland, California, with the Implementation of an Enterprise GIS, Benefiting both the Seaport and Airport

The Port of Oakland is a combined seaport and airport agency in the San Francisco Bay area, supporting approximately 50,000 jobs in the Northern California region.

- Fifth busiest container port in the US and fourth busiest airport in California
- Reliant on City’s police and fire response on land, and on County and Coast Guard in the water
- Mix of industrial, commercial, residential, and recreational land use

Challenges

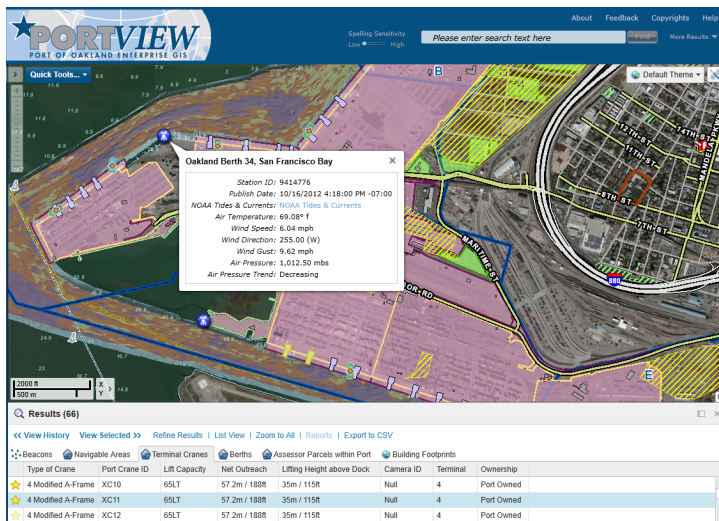
A highly dynamic environment, with numerous departments needing to collaborate response to:

- Significant threat profile: civil unrest, terrorism, earthquake
- Rapid reduction of internal staff, increased reliance on contractors
- Port tightly interwoven with Oakland’s central business district

Solution

An Esri-based Enterprise GIS that cuts across the organization to address operational, security, engineering, and environmental issues:

- Regional and port-specific data and ready-made maps served directly from Esri ArcGIS Server to other software and systems.
- Integrated display of static GIS data and dynamic data including vessels, weather, live camera feeds, 360° imagery and engineering drawing repository.
- Delivery and integration of GIS and CAD geospatial information via **PortView** – the Port-wide Intranet GIS web map viewer.



Opportunity

NorthSouth GIS is now offering the delivery of similar capabilities as implemented at the Ports of Oakland, Los Angeles, and Stockton to other port clients for both on-premise implementation or via our cost effective, secure Cloud technology deployment.



NorthSouth GIS
 312 East First Street, Suite 300
 Los Angeles, CA 90012
 US +1 800 866 5013
 Int'l +1 310 606 2783
 info@northsouthgis.com

ports.northsouthgis.com